

19" 4U / 100Ah Lithium Battery



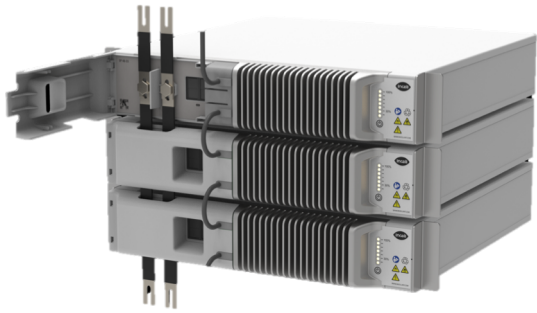
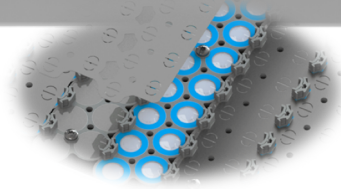
SLB48-100-144-2

14S Series, Generation 5

Incell Smart Lithium Battery™ is an advanced power backup system for telecom use. Its rechargeable lithium-ion battery provides reliable power backup for hybrid, off-grid and grid-connected telecom sites worldwide.

intelligence. automatic balancing, safety features, remote monitoring options and much more.

built-in charge control. patented Current Limiting Device™ allows any charge current without battery shutoff.



robust design. extra protection against dust and moisture for prolonged life.

high energy density. more backup per footprint.

easy, as it should be. easy to install and maintenance free.

Technical specification

Enclosure Size	19" 4U
Lithium Chemistry	NMC
Nominal Voltage	50.4 V
Capacity Ah	100 Ah
Energy Wh	5040 Wh
Calendar Life	>15 Years
Cycle Life (@ 80% SOC)	>6000
Max Discharge Current	100 A
End-of-Discharge Voltage (LVBD) **	42 V
Max Charge Current	50 A
Charge Current Limitation (CLD) *	50 A
Charge Voltage for 100% SOC	58.8 V
Charge Voltage for 80% SOC	56V
Normal Operating Ambient Temp. Range	+5 to +50°C
Extended Operating Cell Temp. Range	-20 to +70°C
Storage Temperature	-20 to +50°C
Weight (Kg)	36 Kg
Dimensions (mm)	W 440 D 358 H 174
Communication Port	RS485, RJ45
Management & Monitoring	Software for PC (Incell Studio) included for full local monitoring and management. Remote connection with Modbus

*If the recharge current is 50A or higher, the battery will automatically reduce the charge current to 6-12A until 100% SOC
**Cut off when one cell reaches 3.0V; 13 cells in series
for >14 modules in parallel a battery controller is required